

Art Portfolio Examples



Art Portfolio Review Goals

- Provide art students with the necessary skills to receive a passing score on the College Board AP Studio Art Portfolio and qualify for college credit
- Improve and strengthen the Art One curriculum to provide high school students with a well-rounded foundation program for creating art
- Increase the number of AP Studio Art students who are prepared to enroll in challenging AP art courses

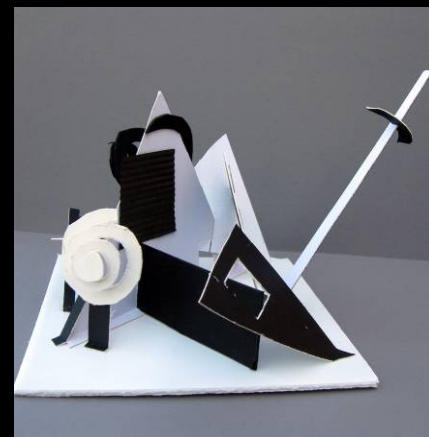
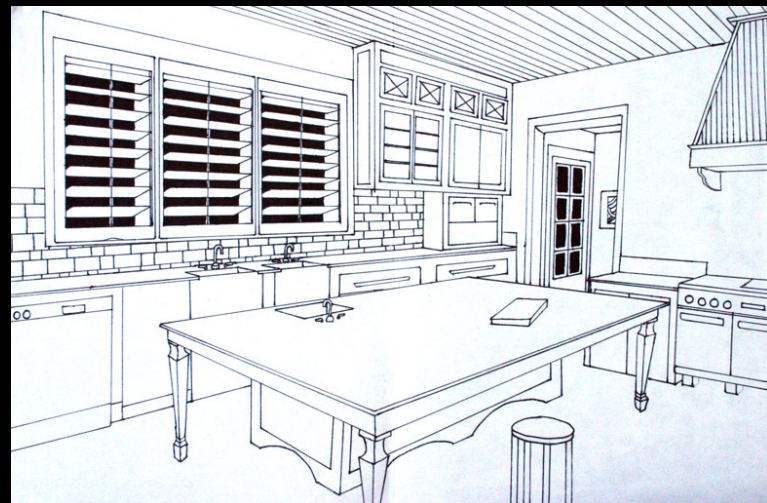
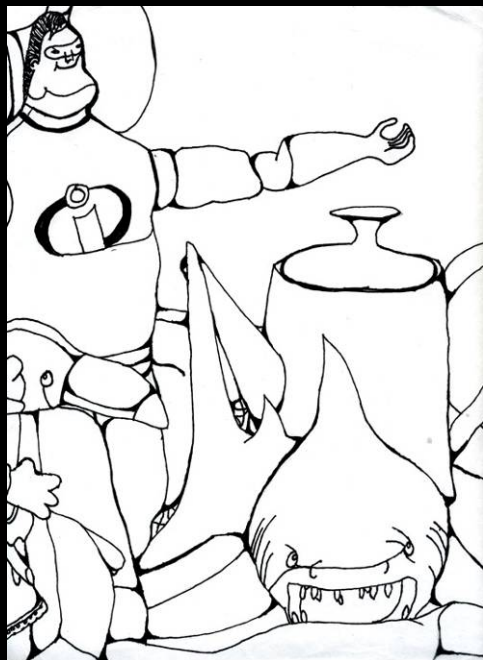
Instructional Goals of Pre-AP and AP Studio Art

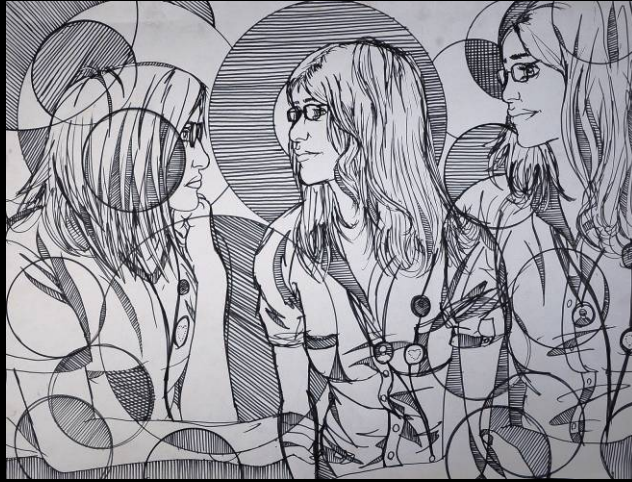
Based on AP College Board Instructional Goals for Studio Art

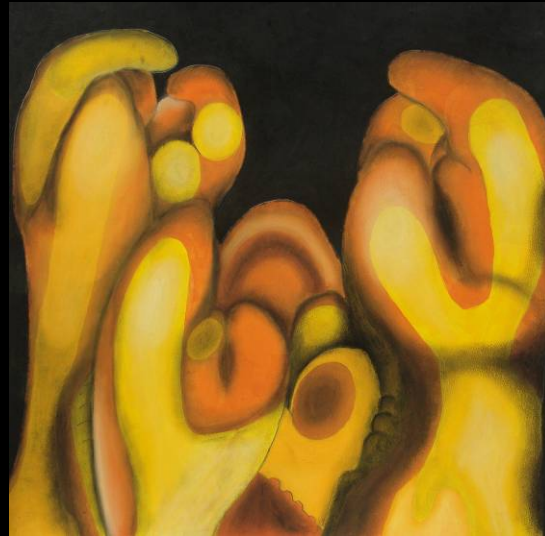
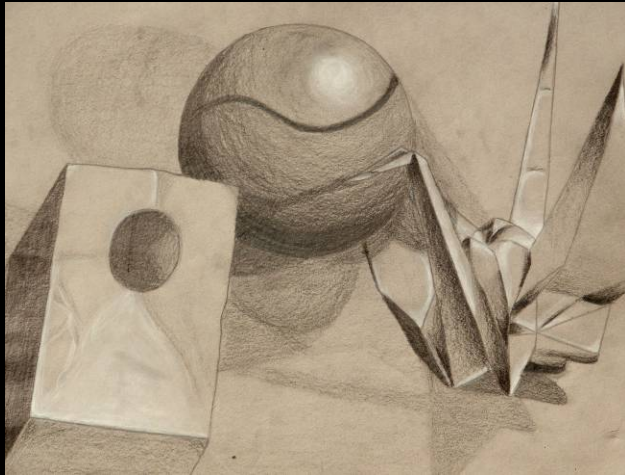
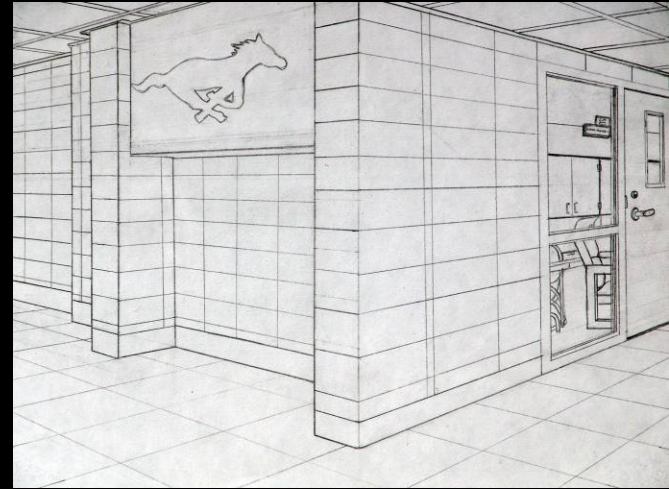
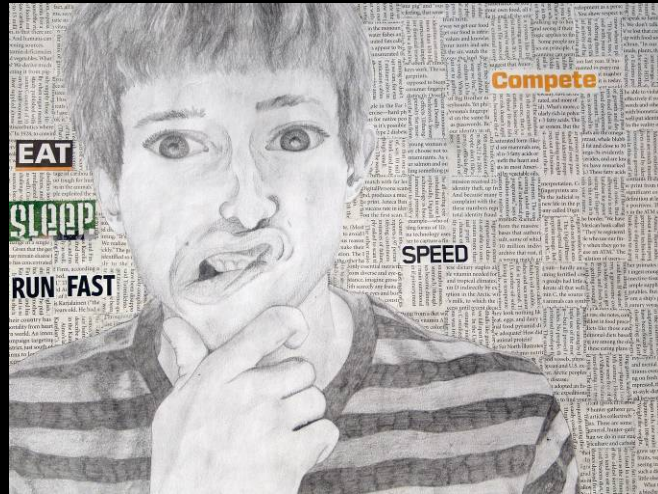
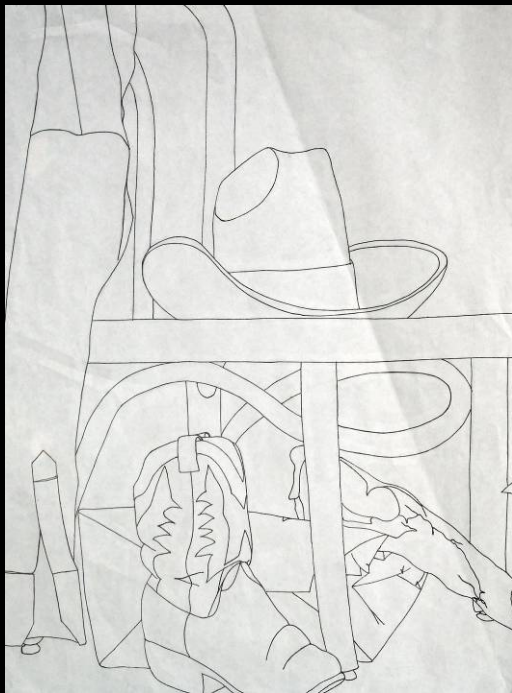
- Encourage creative and systematic investigation of formal and conceptual issues
- Emphasize making art as an ongoing process that involves the student in informed and critical decision making
- Help students develop technical skills and familiarize them with the functions of the visual elements
- Encourage students to become independent thinkers who will contribute inventively and critically to their culture through the making of art

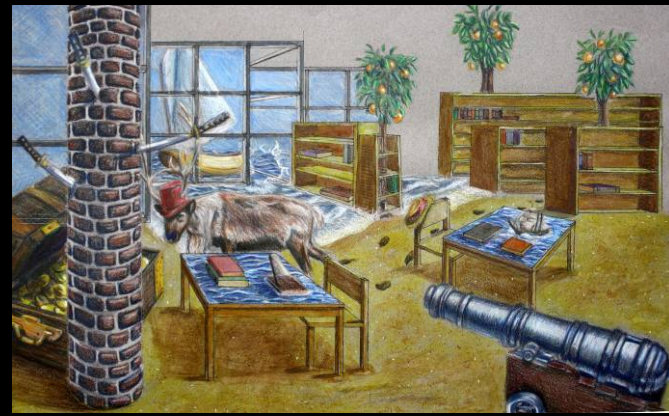
GRADING RUBRIC FOR A “6”

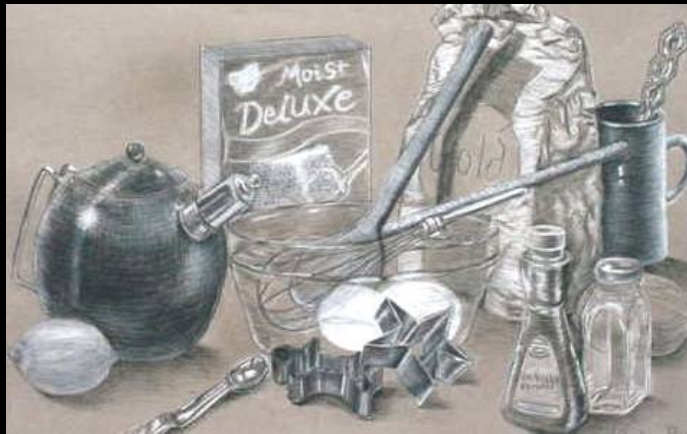
- Is consistently of high quality, although not all pieces will necessarily be at the same level of expertise
- Shows an imaginative, inventive, and confident articulation of design elements and principles
- Uses materials effectively; technique is generally excellent
- Demonstrates evidence of confidence and of verve
- Shows a well informed composition

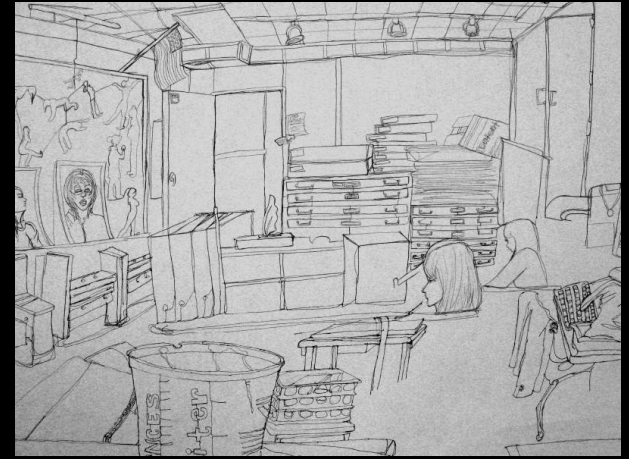
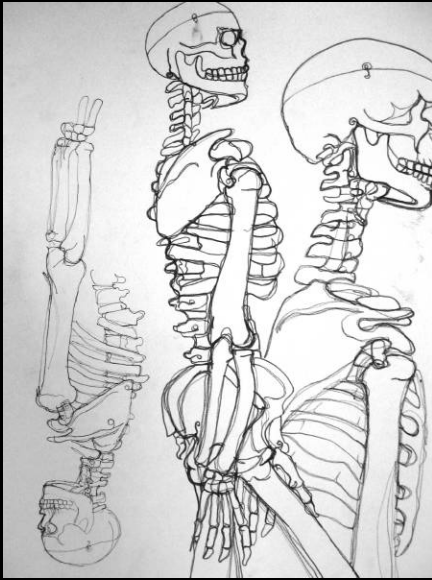


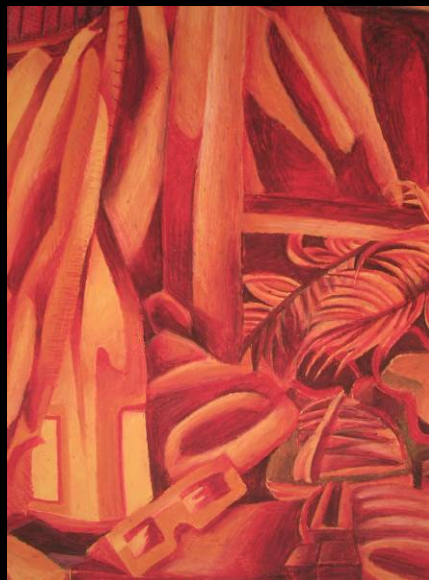
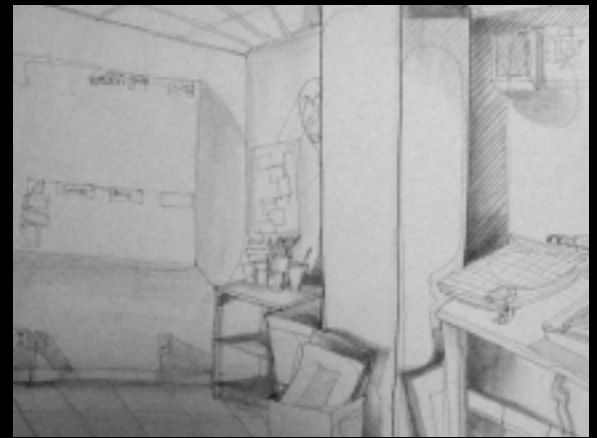
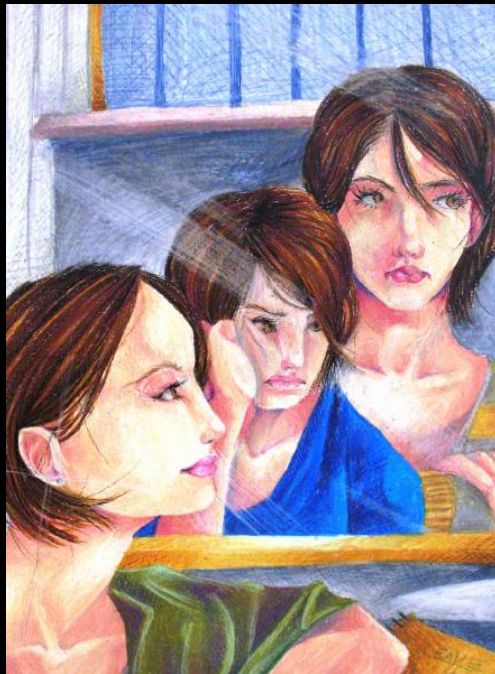
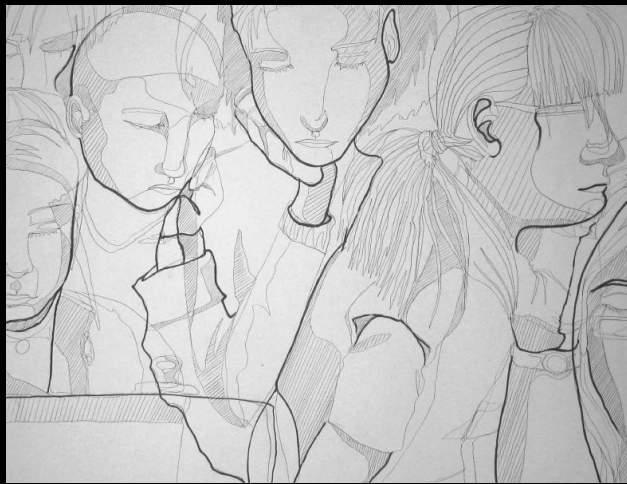






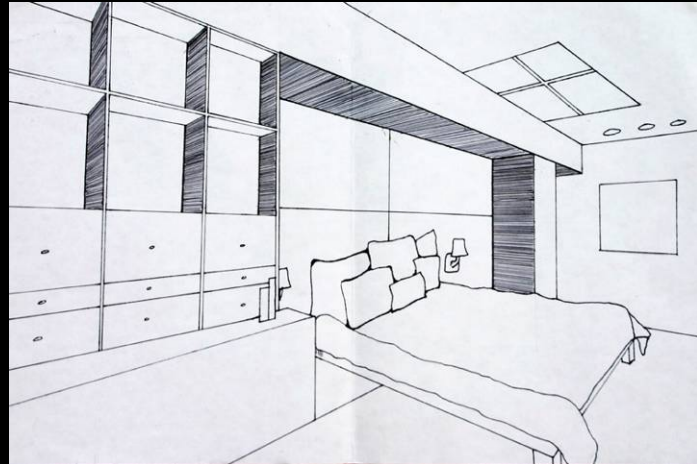
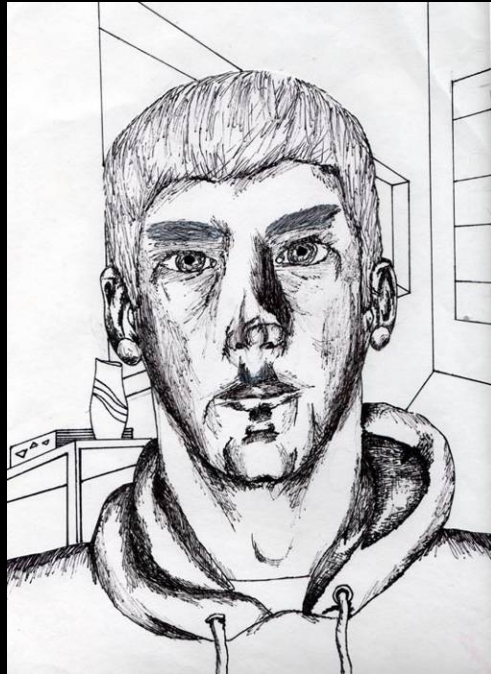
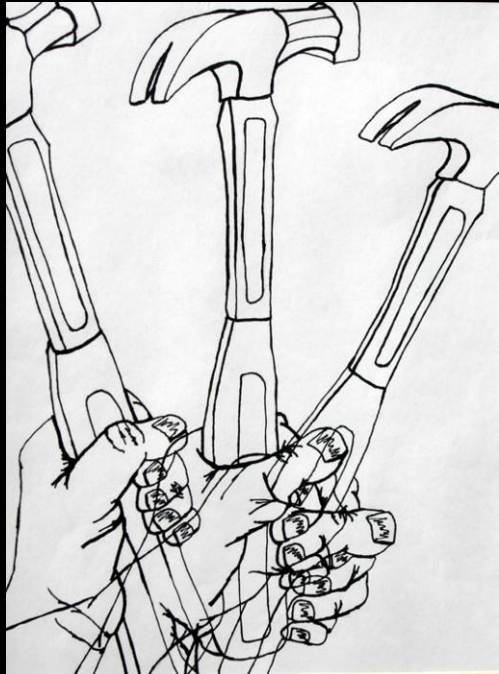


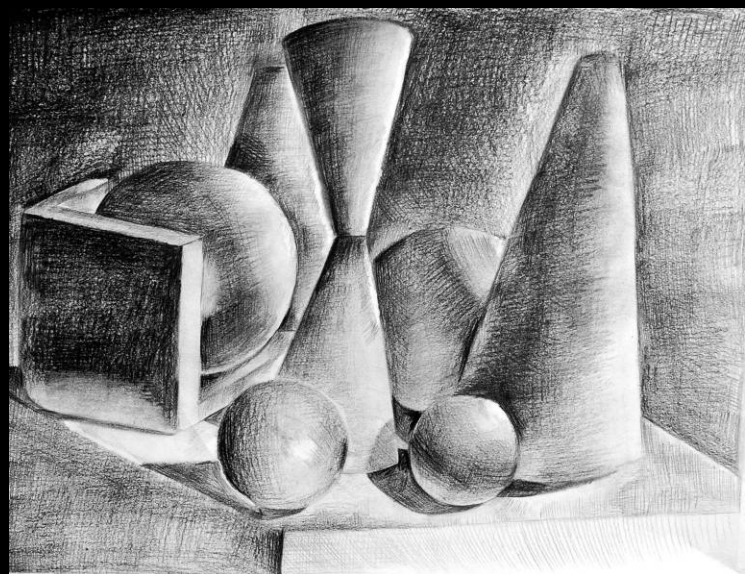
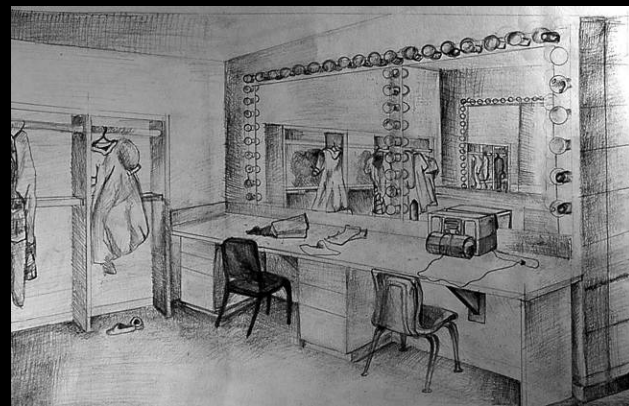
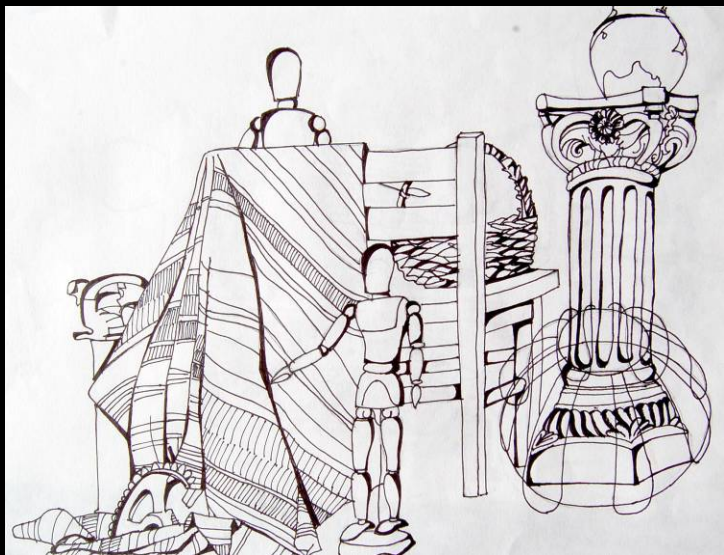




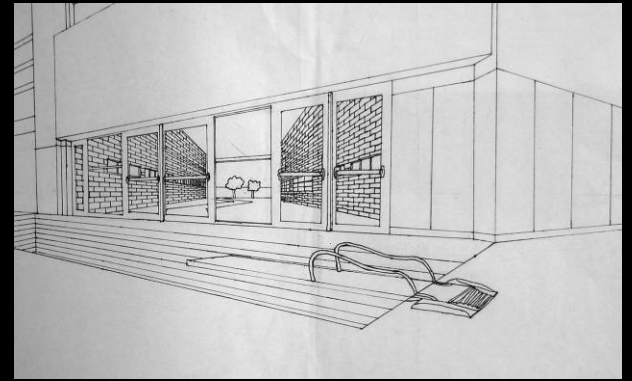
GRADING RUBRIC FOR A “5”

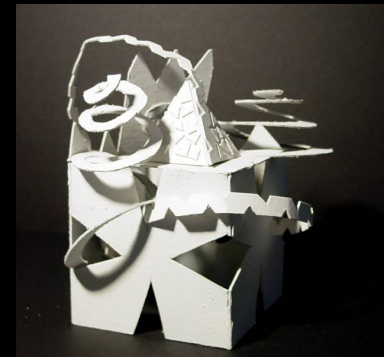
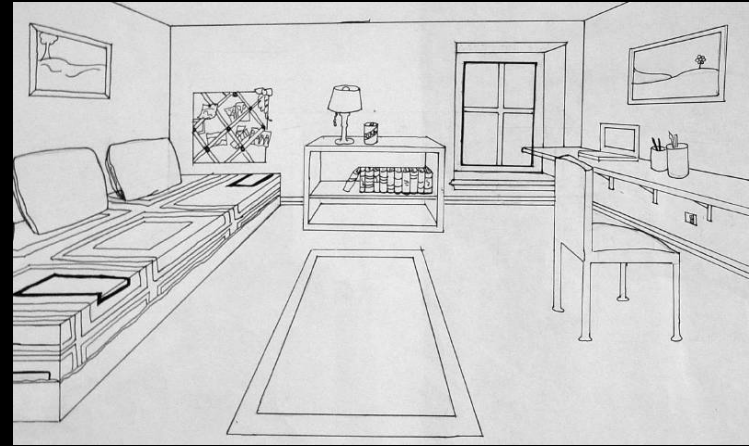
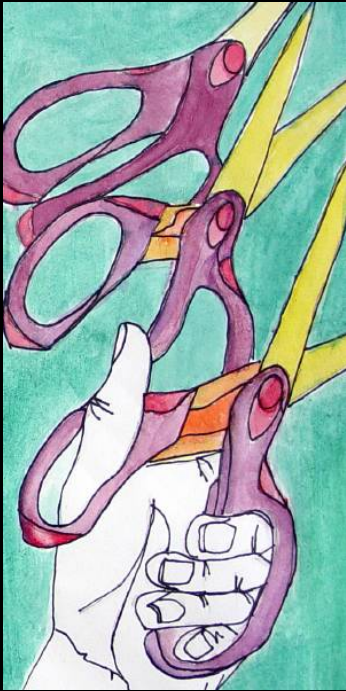
- Generally strong, although there may be inconsistencies in overall quality
- Shows evidence of thinking; i.e., it conveys a sense that it is about something and is fairly confident
- Successfully engages with most aspects of technique and materials
- Demonstrates a strong grasp of the elements and principles of design
- Shows generally strong composition

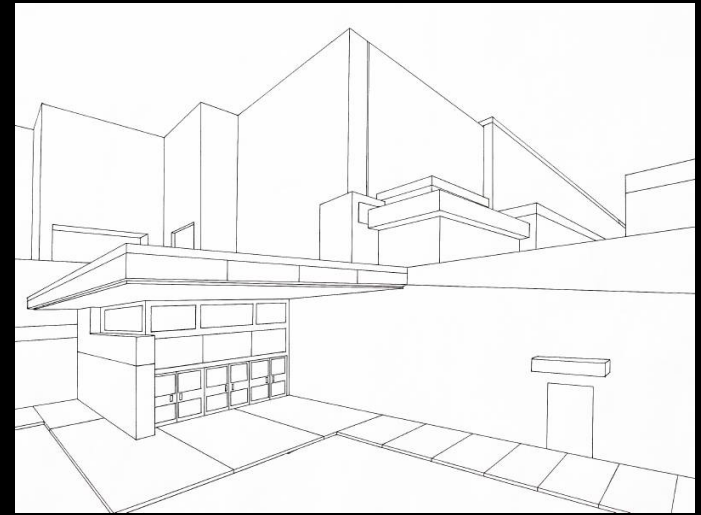






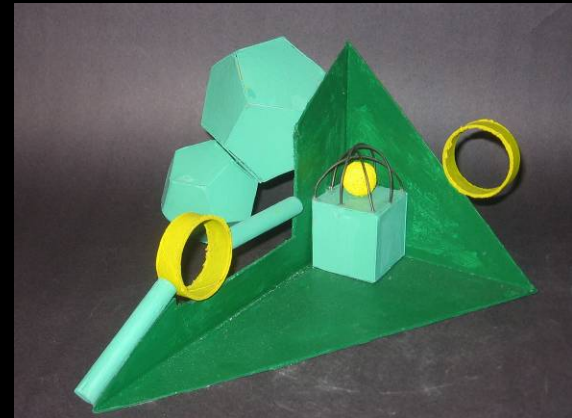
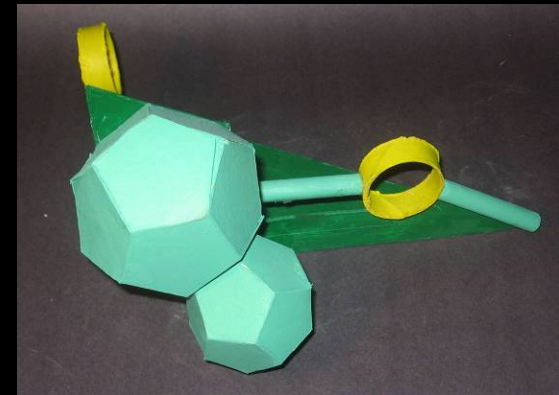
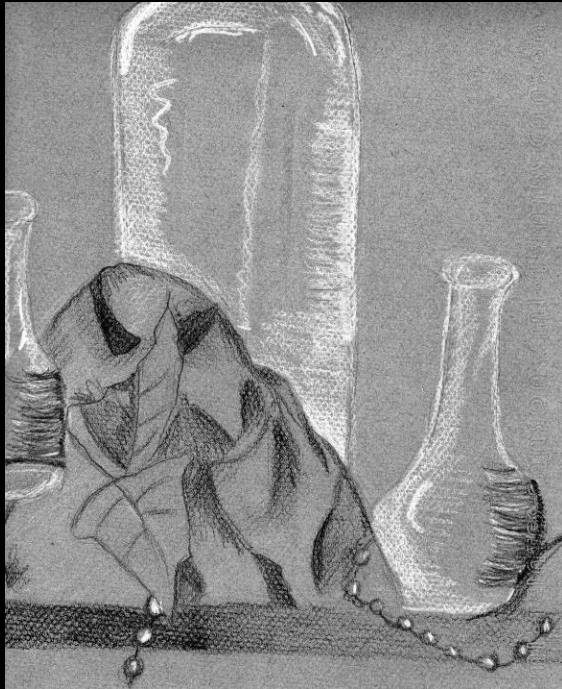
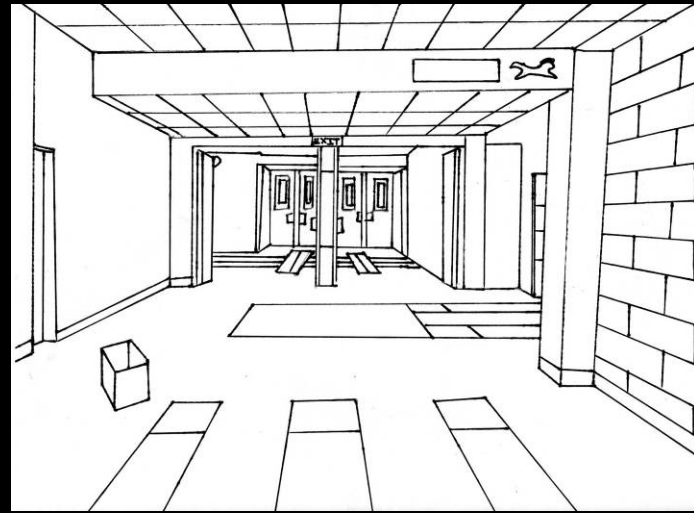


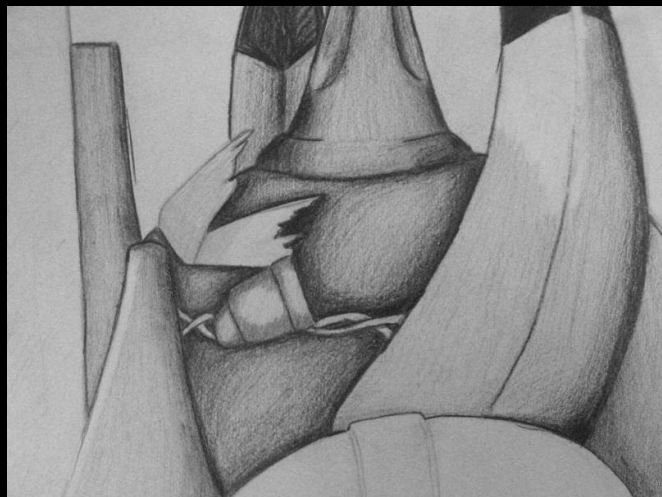


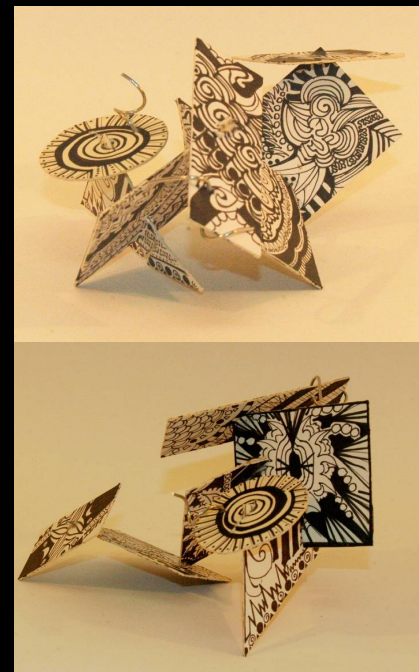
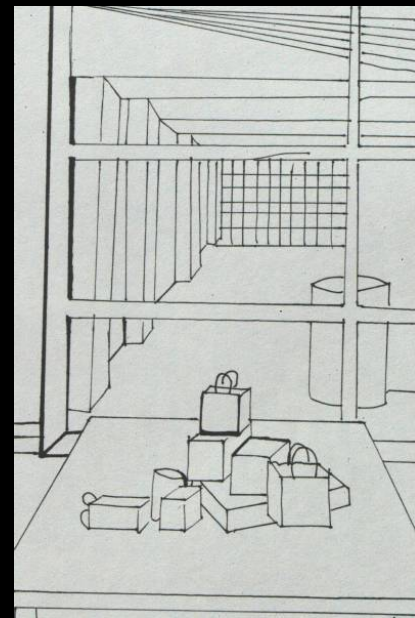


GRADING RUBRIC FOR A “4”

- Has some sense of purpose or direction, but it may not be fully resolved
- Demonstrates some degree of success and shows some manipulation of ideas
- Demonstrates a good understanding of the elements and principles of design
- Has some technical aspects that are handled well or some ideas that are handled well, but the two don't always mesh and work together
- Shows a sense of technical competence

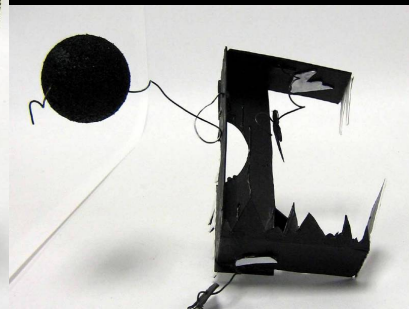
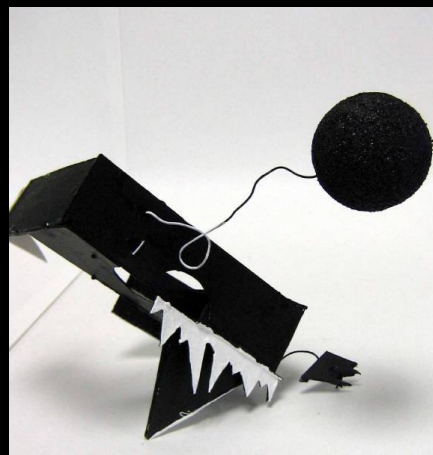
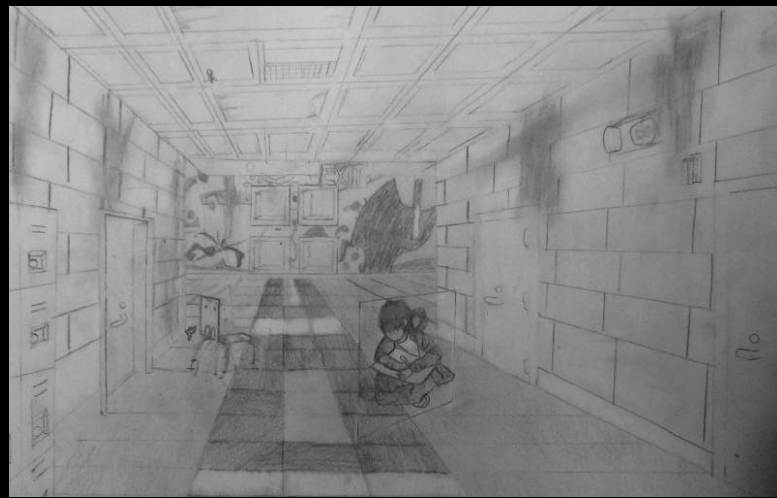


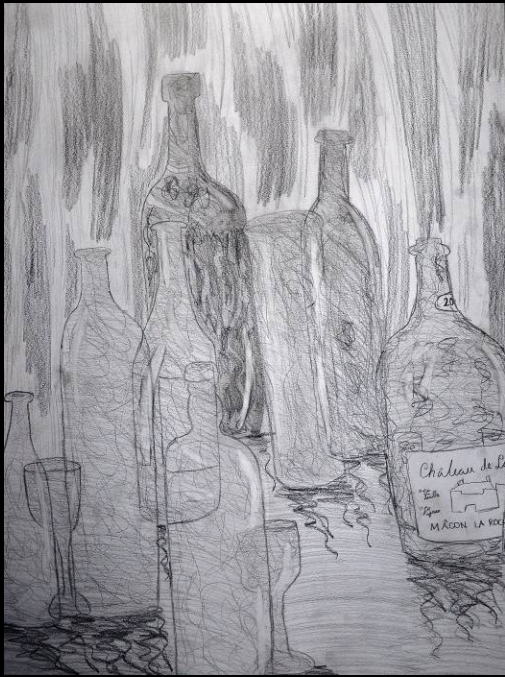
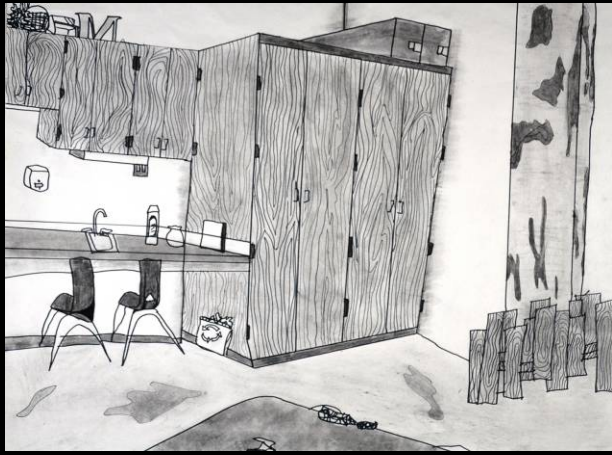
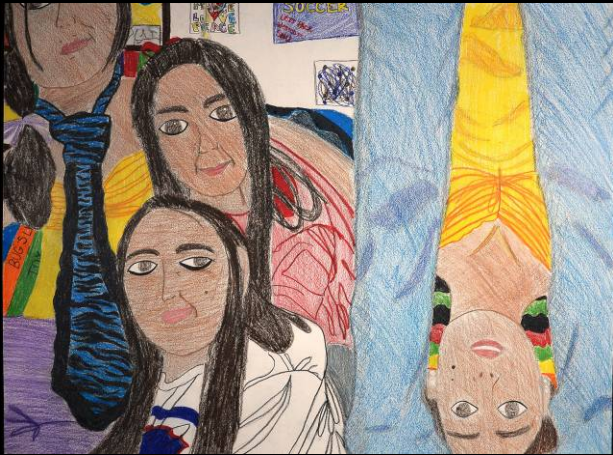


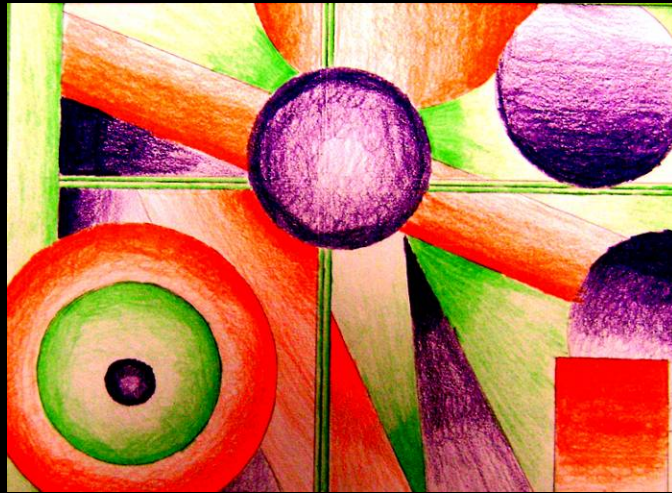
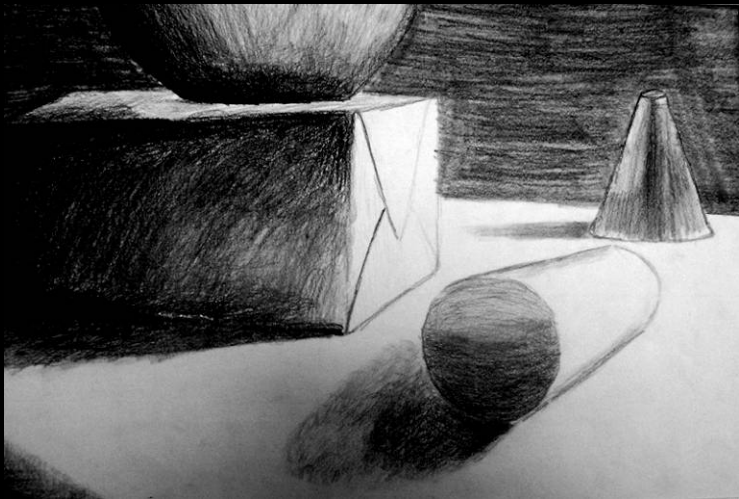
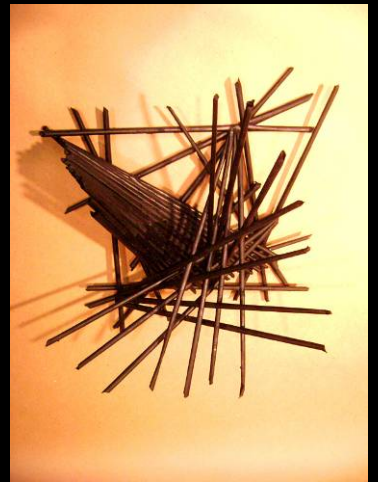
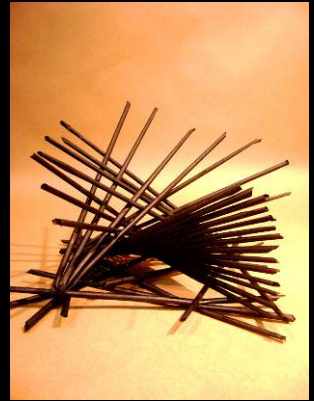
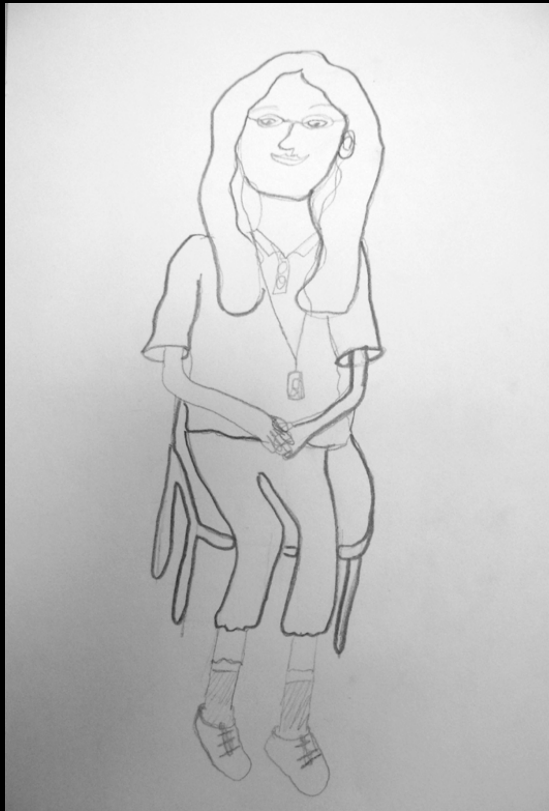


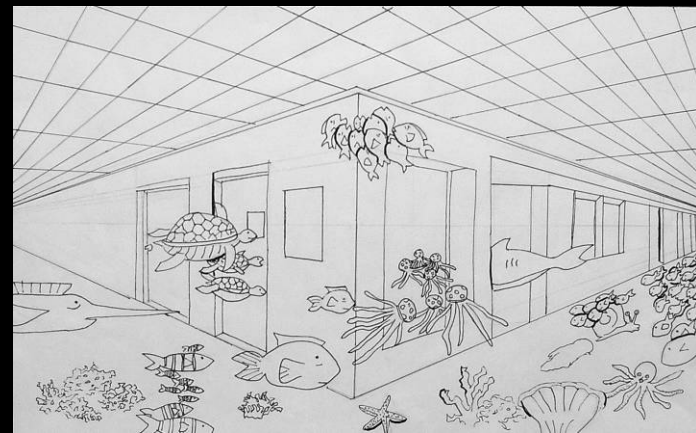
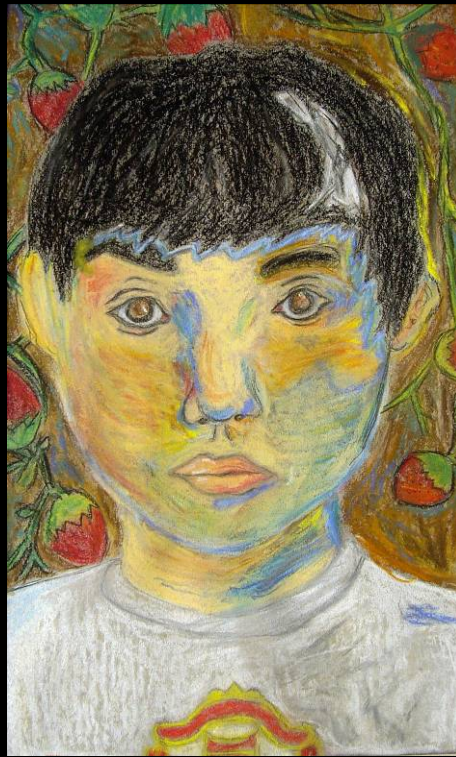
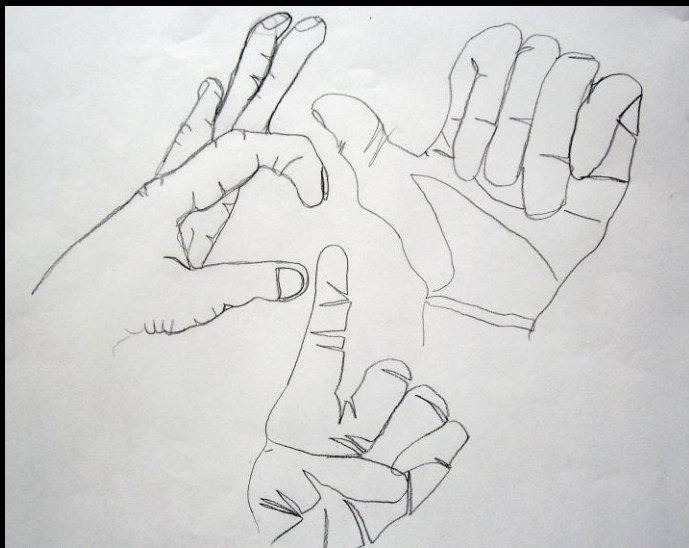
GRADING RUBRIC FOR A “3”

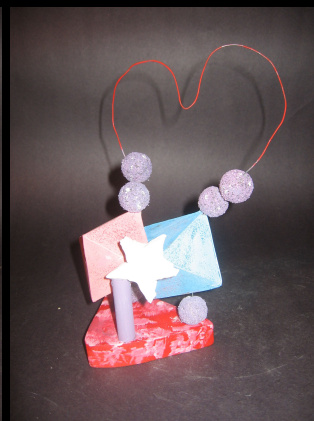
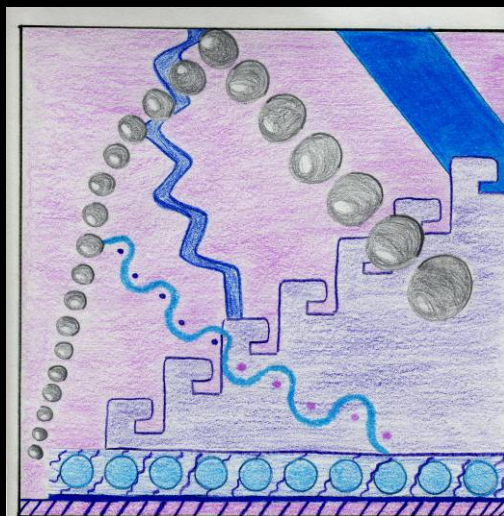
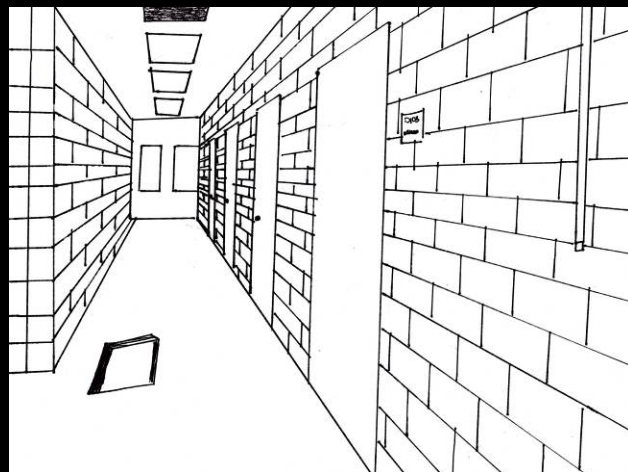
- Shows a sense of real effort, but problems are not successfully resolved
- May be more accomplished technically than it is conceptually
- May not show the technical skills needed to resolve the ideas it addresses
- Shows an awareness of the elements and principles of design
- Shows ambition while achieving only moderate success.

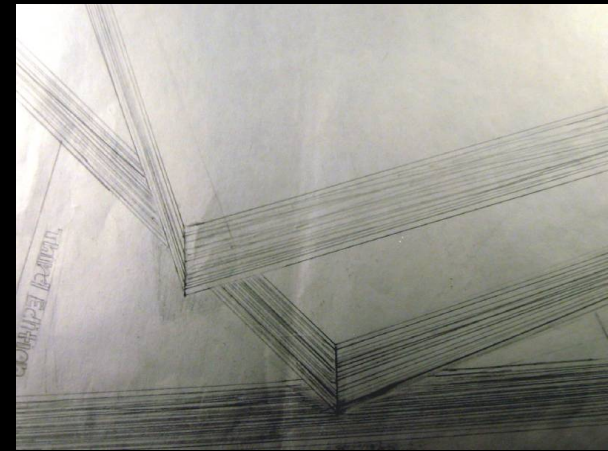
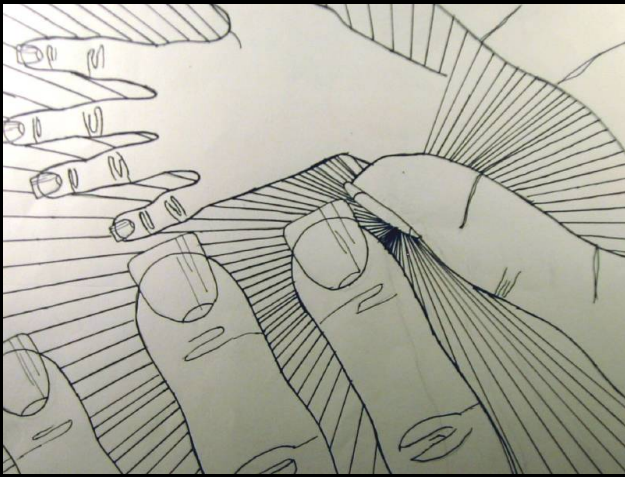












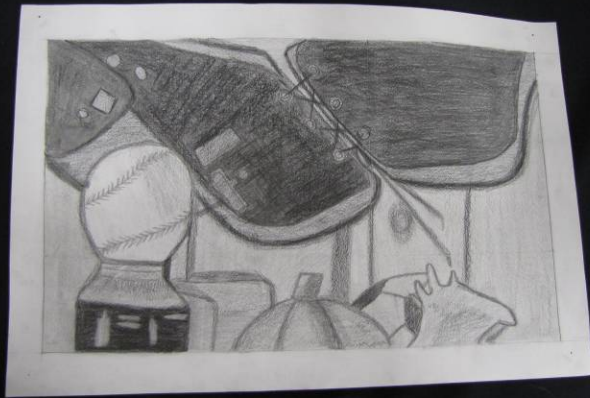
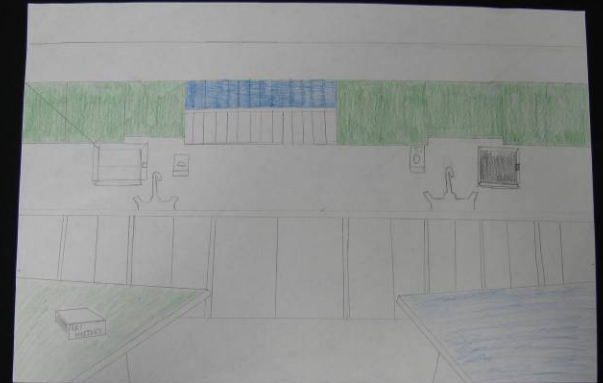
CONTOUR: FIGURE OR STILL LIFE

Strengths

- Close observation of details using continuous lines
- Shows understanding of proportion and form through use of line
- Sophisticated use of line variation and weighted lines that suggest form and mass
- Creative interpretation of subject matter
- Successful composition

GRADING RUBRIC FOR A “2”

- Shows weak or awkward technique
- Solves problems simplistically
- Has little sense of exploration
- Shows little awareness of elements and principles of design; composition is weak
- Shows limited artistic decision-making





GRADING RUBRIC FOR A “1”

- Shows little evidence of thinking/artistic decision-making
- Reveals a misunderstanding of technique
- Shows a lack of awareness of tools/media
- Uses trite solutions to visual problems
- Is poorly composed, with minimal consideration given to elements and principles of design.

Lessons

CONTOUR: FIGURE OR STILL LIFE

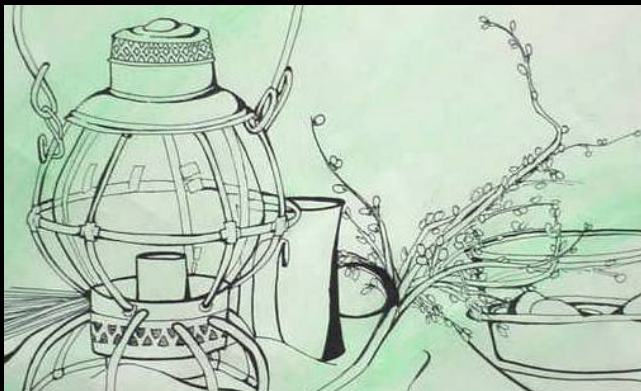
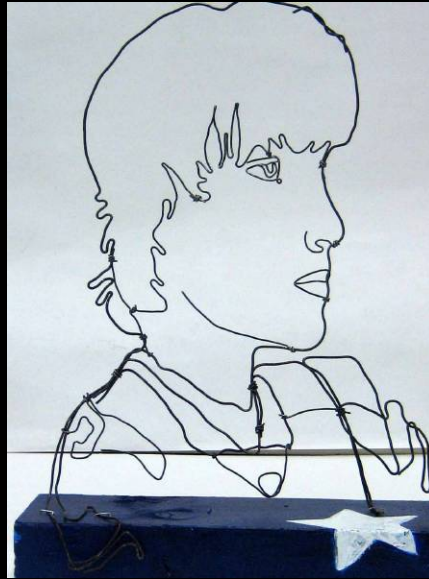
Strengths

- Close observation of details using continuous lines
- Shows understanding of proportion through use of line
- Sophisticated use of line variation and weighted lines that suggest form and mass
- Creative interpretation of subject matter in a successful composition

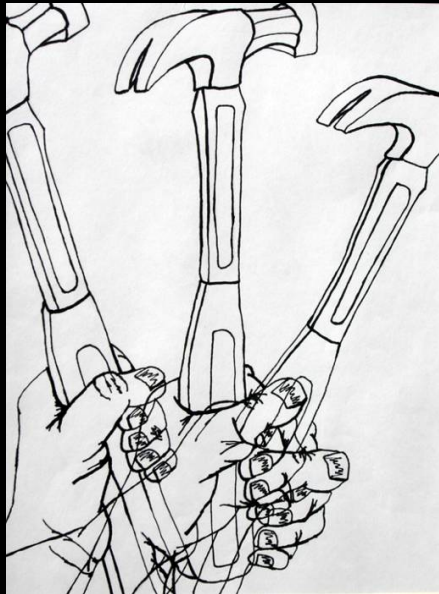
Weaknesses

- Take more time observing and recording what you see; include more details
- Work on mastering proportion, carefully compare the size relationship of parts of the object to the entire object before you begin drawing
- Lines need more variety such as width, direction, value, etc. to suggest form and mass
- Take more time in the selection of the subject matter as well as its placement in the composition

Contour



Contour



PORTRAIT

(3-D Permissible; Must be from Direct Observation)

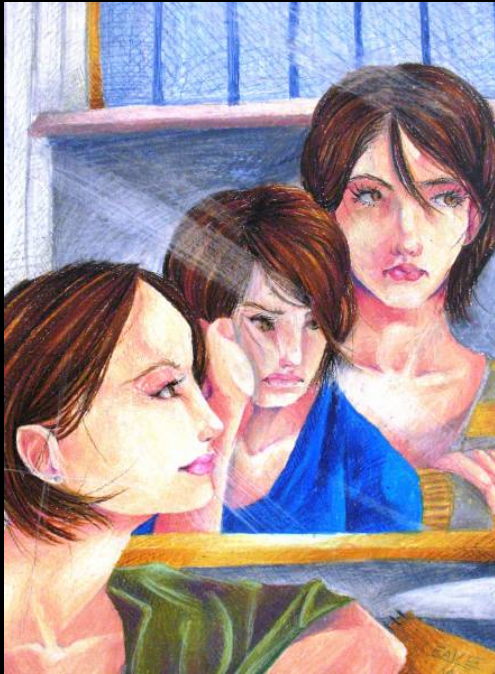
Strengths

- Shows an understanding of proportions
- Accurate observational skills of features
- Inventive perspective and composition: $\frac{3}{4}$ view, foreshortened view, asymmetrical balance, interesting negative space
- Demonstrates a creative expressive quality

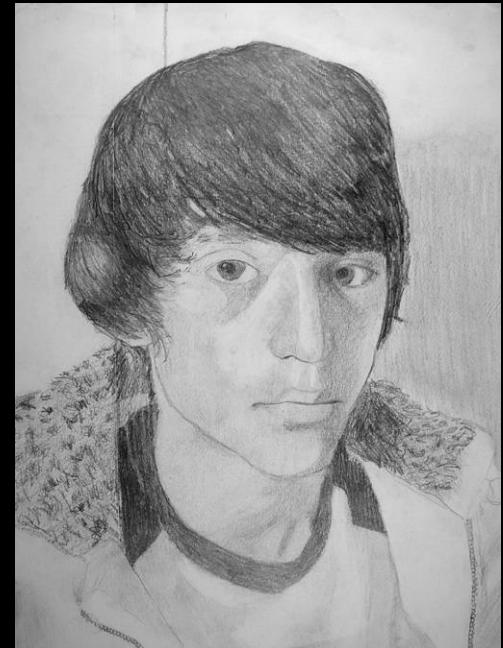
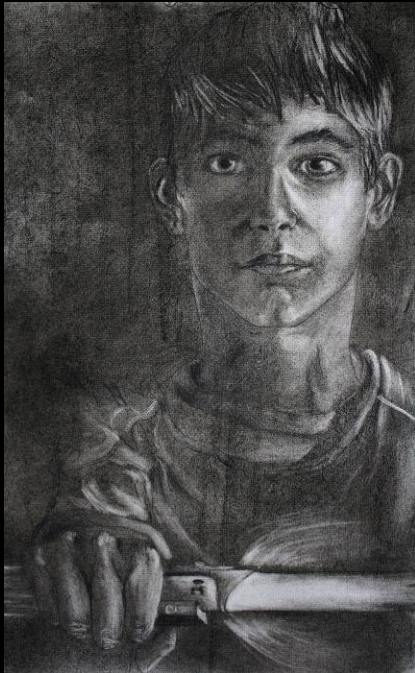
Weaknesses

- Lack of understanding or mastery of body proportions; take time to compare parts of the figure to the whole figure
- Composition needs improvement
- Portrait appears flat; lacks depth
- Avoid a floating head by including neck, collar, shoulder or a floating figure by including the background in the composition

Portrait



Portrait



LINEAR PERSPECTIVE

(Interior or Exterior View; Must be from Direct Observation)

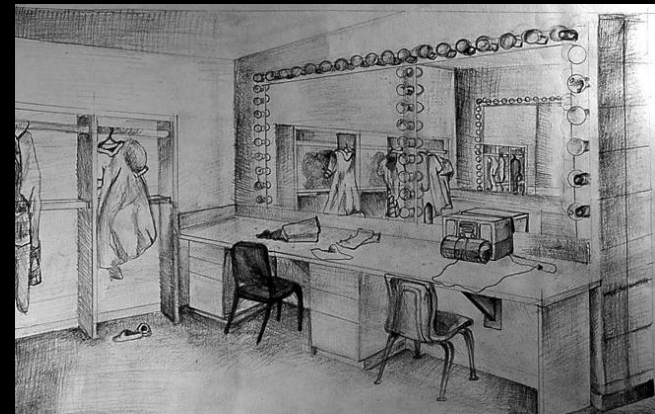
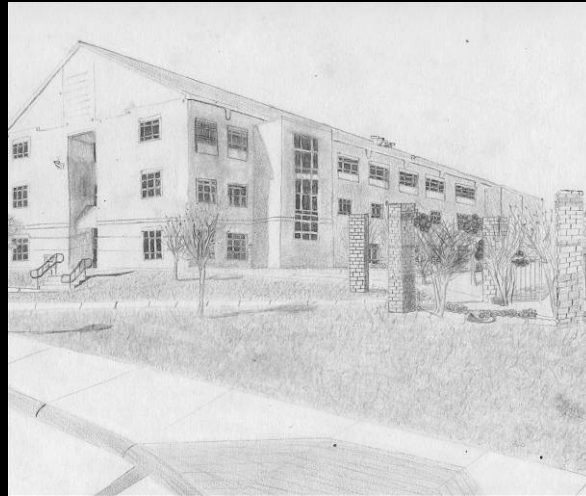
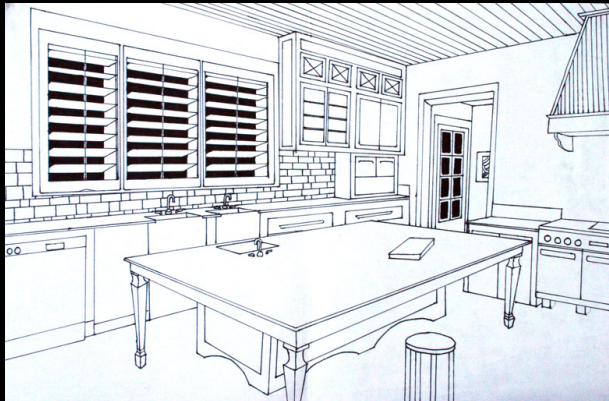
Strengths

- **Correct use of 1 and 2 point linear perspective (vanishing point, horizon line, straight edge) from direct observation...not invented**
- **Innovative setting with foreground, middle ground, and background**
- **Addresses perspective through placement, size, overlapping, value**
- **Creative, effective, complex composition**

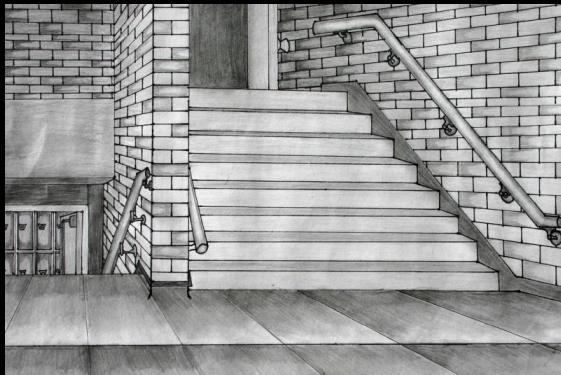
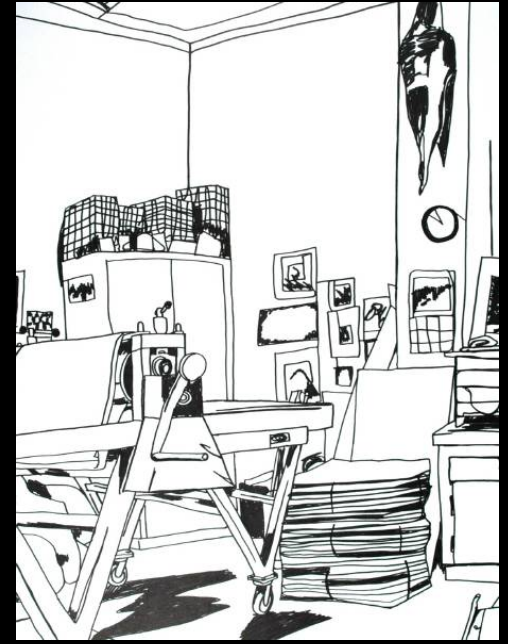
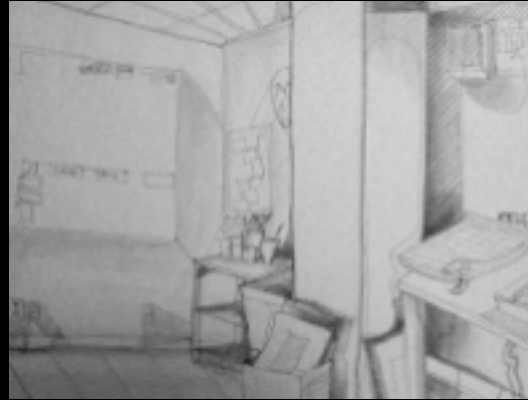
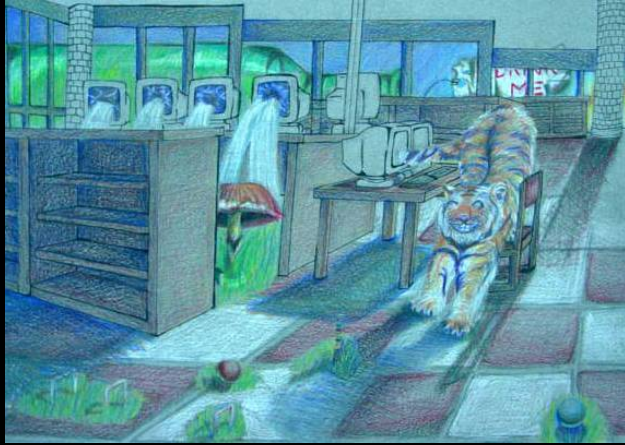
Weaknesses

- **Inaccurate use of linear perspective (vanishing point, horizon line, straight edge)**
- **Overly simplistic; could have been more inventive with the setting**
- **Lack of understanding of perspective using size, placement, or value**
- **Ineffective composition; consider using an asymmetrical composition**

Perspective



Perspective



VALUE STUDY

(Still Life: Must be from Direct Observation)

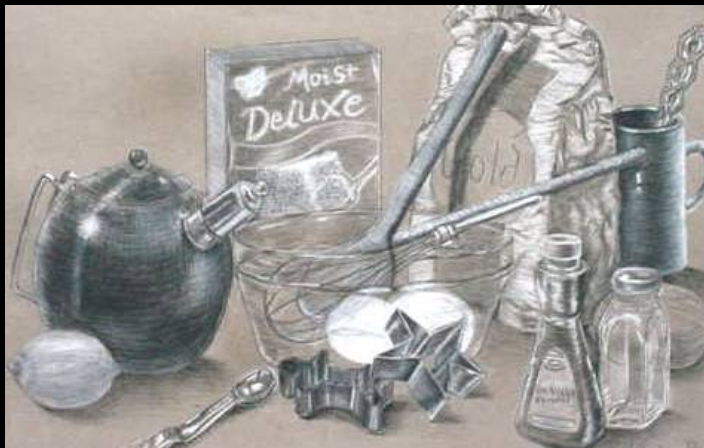
Strengths

- Accuracy of rendering from direct observation using full value scale and strong contrast suggests form and mass
- Value is beneficial to creating the illusion of visual space (foreground, middle ground, and background)
- Strong suggestion of a direct light source with realistic cast shadows
- Effective composition with an area of emphasis created by a contrast in value

Weaknesses

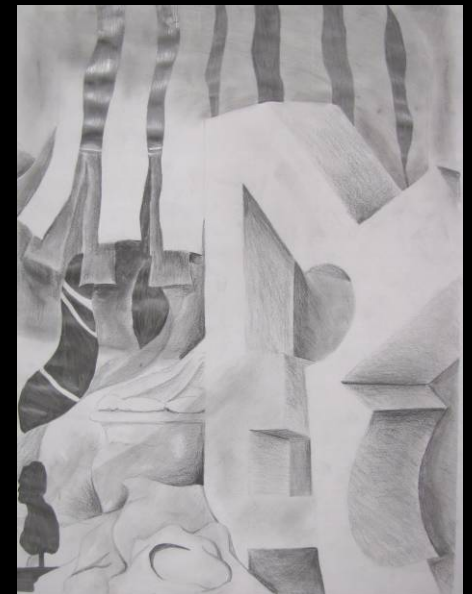
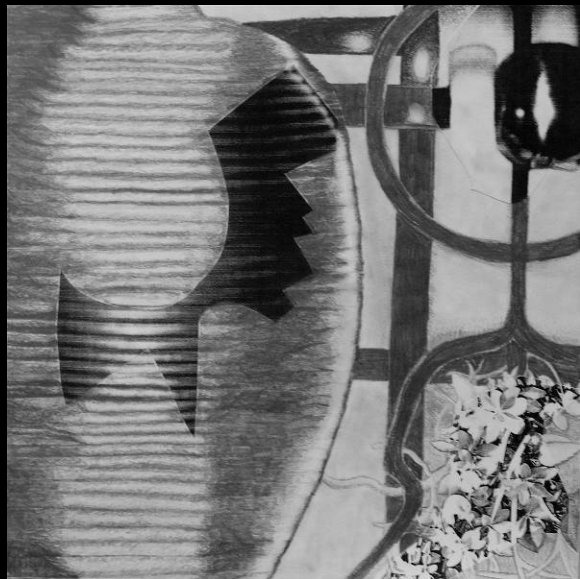
- Lacks accuracy in recording visual observations
- Lack of depth (shapes are flat); remember to establish a light source
- Value distracts from focal point creating an ineffective composition
- Needs higher contrast: mid tones, highlights, deep shadows, cast shadows

Value





Value



COLOR THEORY

(Photography or Digital permissible)

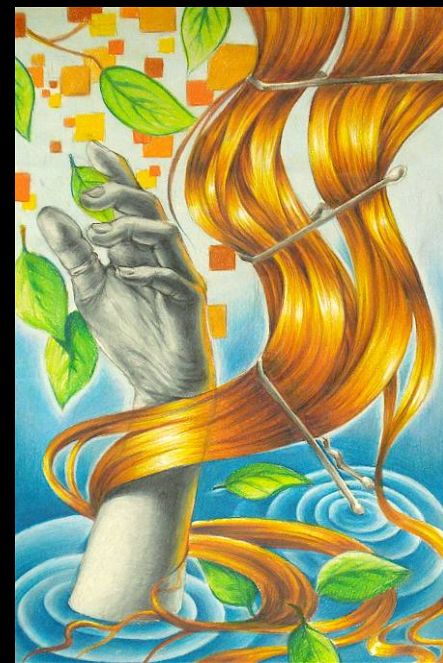
Strengths

- **Successful use of a unified color scheme: monochromatic, analogous, complimentary**
- **Strong contrast is evident in finished work through use of tints and shades**
- **Visual balance and focal point area emphasized through color**
- **Appropriate use of media with successful application of color**

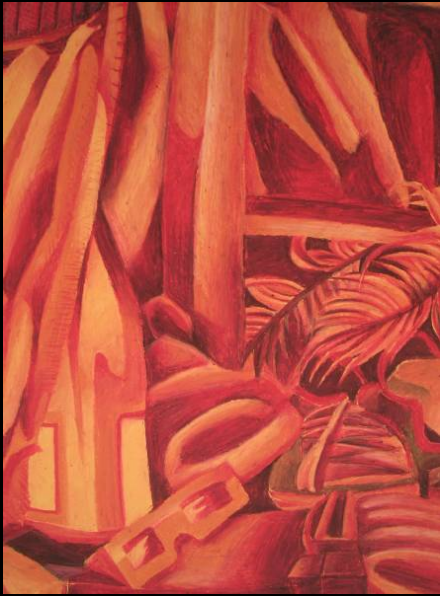
Weaknesses

- **Color scheme is not clearly defined; plan ahead**
- **Composition is not effective; remember to balance placement of color to create a strong area of emphasis**
- **Color is flat; more contrast is needed**
- **Technical skills with color media are not proficient in overall success of art work**

Color



Color



SCULPTURE

(Always photograph two views)

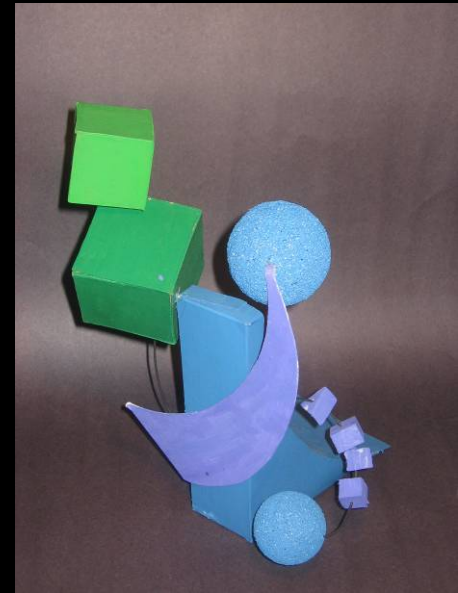
Strengths

- Well developed negative and positive space “in-the-round”
- Successful use of balance
- Effective, complex composition with an area of emphasis
- Appropriate use of materials; craftsmanship is evident in work with appropriate finish

Weaknesses

- Composition lacks strong balance
- Design appears flat; does not appear three dimensional on all sides
- Ineffective use of positive and negative space
- Technical skill in working with materials/finish needs improvement

Sculpture



Sculpture

